



Dry Bar Assembly Instructions

Parts list: 4 x legs, 4 x top rails, 3 x bottom rails, 4 x corner brackets, 4 x internal brackets, 6 x foot rail brackets, 8 x long Allen key screws, 24 x short Allen key screws, 2 x Allen key tools.

(Table top fastening screws will be supplied with these parts. However always make sure they are protruding the correct length for the tabletop and thickness you have chosen. **We will not be responsible for incorrect installation of tabletop).**



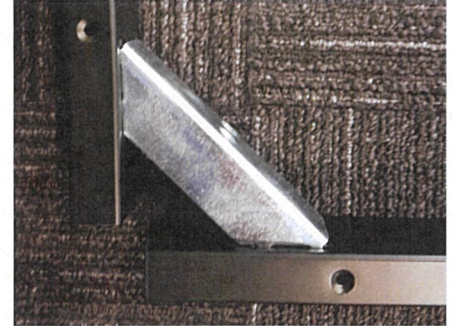
Step 1

Remove parts from packaging and lay out on a table.



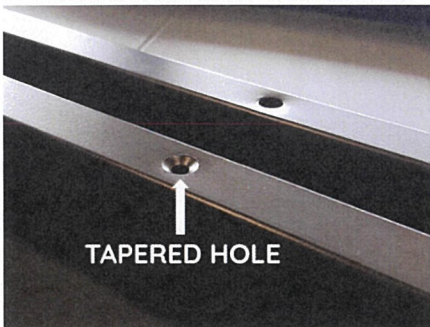
Step 2

Fit foot rail brackets to corresponding rails.

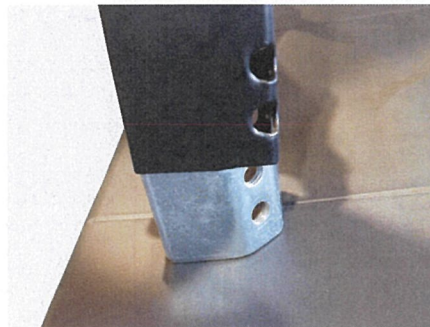


Step 3

Lay the 4 x top rails out with corner brackets. Attach brackets to the corresponding slots and join top rails together.

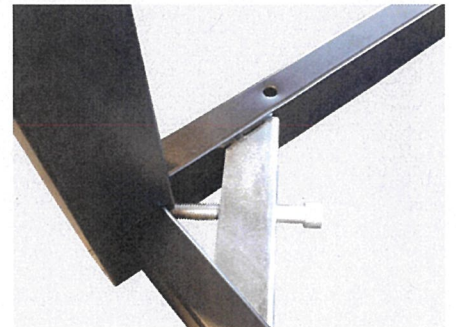


NOTE: Tapered holes must face up. As per image showing the difference between the two.



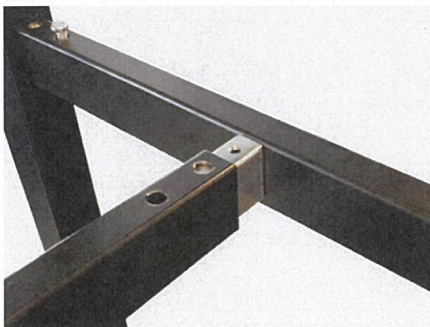
Step 4

Hold table leg and insert the internal bracket up into the leg. Line the 2 holes up and sit leg back down and butt into the corner of the top rails.



Step 5

Fit screws through the corner brackets and into the legs. Screw each corner finger tight.



Step 6

Then fit the main foot rail.



Step 7

Tighten all screws with Allen key tool provided.



Your Dry Bar base is now complete and ready!